



# GAT MONTHLY MEMBERSHIP PROGRESS REPORT

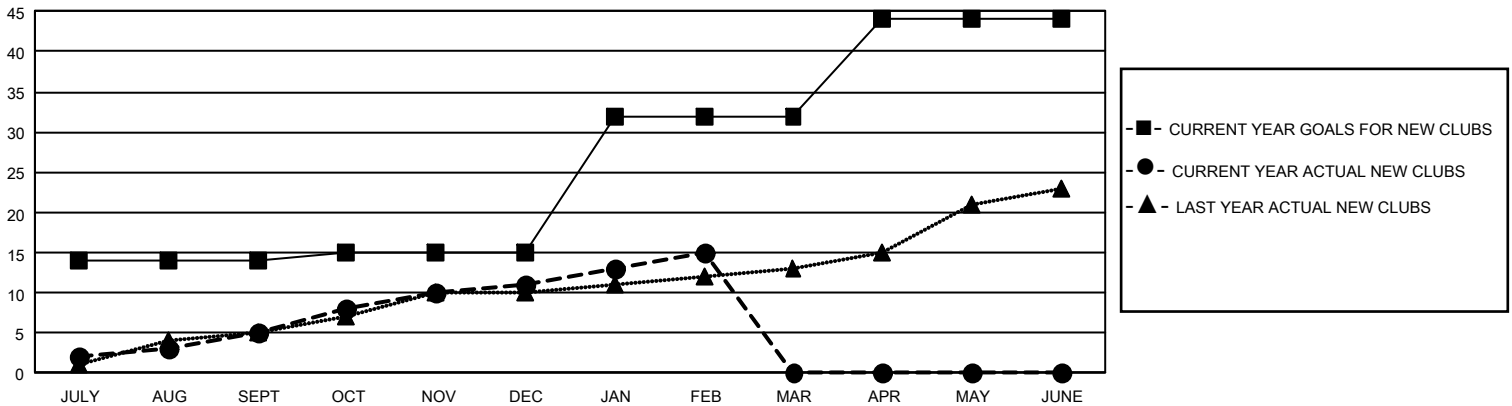
Results as of: 2/28/2025

## GMT Constitutional Area 3, Group C

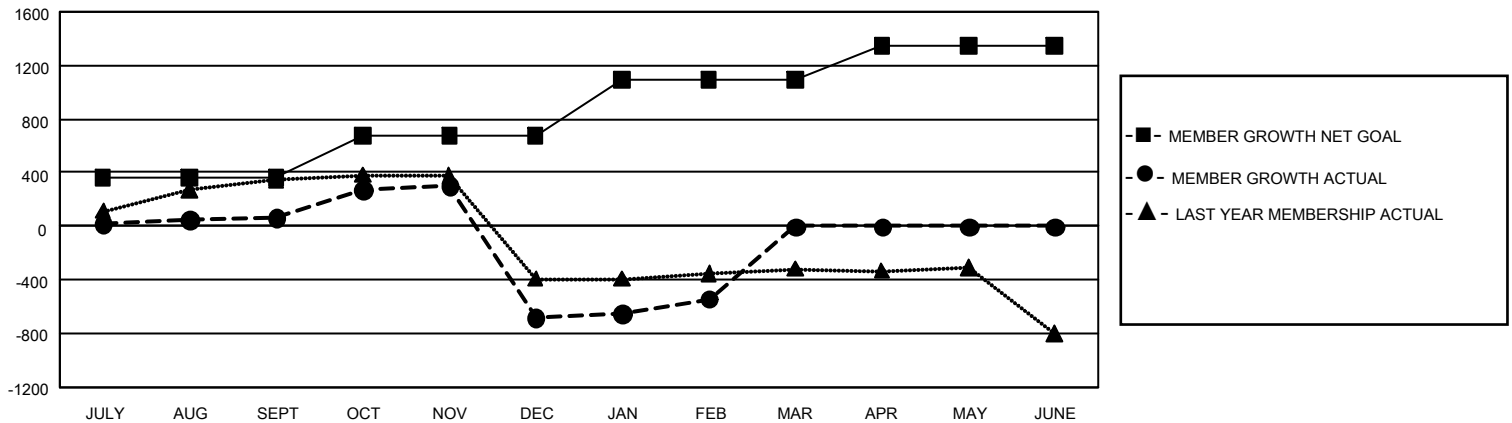
REPORT DOES NOT INCLUDE CLUBS IN UNDISTRICTED AREAS.

Clubs				Members			
RESULTS FOR 2024-2025				RESULTS FOR 2024-2025			
QUARTER	NEW CLUB GOAL	NEW CLUBS	DROPPED CLUBS	QUARTER	MEMBER GROWTH NET GOAL	MEMBER GROWTH ACTUAL	DROPPED MEMBERS ACTUAL (including transfers)
JULY/AUG/SEPT	42	5	6	JULY/AUG/SEPT	361	558	372
OCT/NOV/DEC	3	6	32	OCT/NOV/DEC	315	672	1,327
JAN/FEB/MAR	51	4	2	JAN/FEB/MAR	416	667	255
APR/MAY/JUNE	36	0	0	APR/MAY/JUNE	252	0	0

GOALS AND ACTUAL NEW CLUBS CUMULATIVE



GOALS AND ACTUAL MEMBERS CUMULATIVE



DROPPED CLUBS: 40

309 CLUBS OF 790 ADDED 1 OR MORE NEW MEMBERS

### GENDER DISTRIBUTION

MALE	7,655 (48.65%)
FEMALE	8,068 (51.28%)
NON BINARY	0 (0.00%)
PREFER NOT TO ANSWER	11 (0.07%)

### DROPPED MEMBERS

DECEASED	75
CLUB CANCELLED	724
OTHER	1,148
<b>TOTAL</b>	<b>1,947</b>

[CLICK HERE FOR CUMULATIVE MEMBERSHIP DATA](#)

TOTAL FAMILY UNIT MEMBERS	0
FAMILY MEMBERS PAYING HALF DUES	0